

Chapter 3

Pre-insulated flexible piping

MICROFLEX



Flexible and quick to install
Double-wall outer casing
10-year warranty

MICROFLEX[®]
A **WATTS** Brand

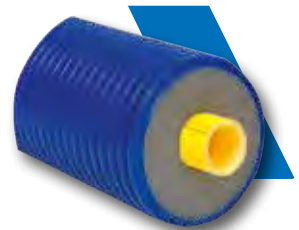
Chapter 3

Pre-insulated flexible piping

MICROFLEX UNO HEATING

Microflex pre-insulated flexible piping for heating and air conditioning systems with single internal pipe in PEX-a SDR11 with oxygen diffusion barrier (DIN 4726), suitable for fluids at temperatures of **-10:-95°C** and pressures up to **6 bar, in accordance with EN ISO 15875**.

Multi-layer thermal insulation in CFC-free expanded PEX cross-linked polyethylene with closed-cell structure. Double-wall corrugated outer casing in PE-HD high-density polyethylene. Supplied in lengths to customer specification. Maximum length 100m.



Part Number	Pipe PEX -a external Ø thickness mm	DN	Ø outside casing mm	Weight kg/m	Bending radius cm	PN
M7525CWI	25/2.3	20	75	0,68	20	6
M9032CWI	32/2.9	25	90	1,00	25	6
M16040CWI	40/3.7	32	160	2,32	35	6
M16050CWI	50/4.6	40	160	2,48	45	6
M16063CWI	63/5.8	50	160	2,78	55	6
M20075CWI	75/6.8	65	200	4,16	80	6
M20090CWI	90/8.2	75	200	4,73	110	6
M200110CWI	110/10	90	200	5,64	120	6
M200125CWI	125/11.4	100	200	6,00	140	6

ACCESSORIES



Dust caps



EPDM end caps



Fitting MJ341



Fix point

Pipe	Part Number	Part Number	Part Number	Ø male thread	Ø external Pipe mm	Part Number
M7525CWI	MS7525	MG751832	MJ3413425/23	3/4"	25/2.3	MFP34
M9032CWI	MS9032	MG901840	MJ3414432/29	1"	32/2.9	MFP44
M12525CWI	MS12525	MG1251832	MJ3413425/23	3/4"	25/2.3	MFP34
M12532CWI	MS12532	MG1251832	MJ3414432/29	1"	32/2.9	MFP44
M16032CWI	MS16032	MG1603250	MJ3414432/29	1"	32/2.9	MFP44
M16040CWI	MS16040	MG1603250	MJ3415440/37	1.1/4"	40/3.7	MFP54
M16050CWI	MS16050	MG1603250	MJ3416450/46	1.1/2"	50/4.6	MFP64
M16063CWI	MS16063	MG1606390	MJ341263/58	2"	63/5.8	MFP2
M20075CWI	MS20075	MG20075125	MJ34121275/68	2.1/2"	75/6.8	MFP212
M20090CWI	MS20090	MG20075125	MJ341390/82	3"	90/8.2	MFP3
M200110CWI	MS200110	MG20075125	MJ3414110/10	4"	110/10	MFP4
M200125CWI	MS200125	MG20075125	MJ3414125/114	4"	125/11.4	MFP4

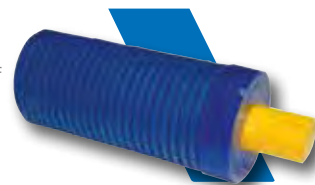
MICROFLEX UNO PRIMO HEATING AND AIR CONDITIONING

Microflex pre-insulated flexible piping for heating and air conditioning systems with single internal pipe in PEX-a SDR11 with oxygen diffusion barrier (DIN 4726), suitable for fluids at temperatures of **-10:-95°C** and pressures up to **6 bar in accordance with EN ISO 15875**.

Multi-layer thermal insulation in CFC-free expanded PEX cross-linked polyethylene with closed-cell structure.

Double-wall corrugated outer casing in PE-HD high-density polyethylene.

Supplied in lengths to customer specification. Maximum length 100m.



Part Number	Pipe PEX -a Ø external thickness mm	DN	Ø outside casing mm	Weight kg/m	Bending radius cm	PN
M9040CWI	40/3.7	32	90	1,11	30	6
M12540CWI	40/3.7	32	125	1,72	30	6
M12550CWI	50/4.6	40	125	1,92	40	6
M12563CWI	63/5.8	50	125	2,16	50	6
M16075CWI	75/6.8	65	160	3,2	75	6
M16090CWI	90/8.2	75	160	3,85	100	6

ACCESSORIES



Dust caps



EPDM end caps



Fitting MJ341



Fix point

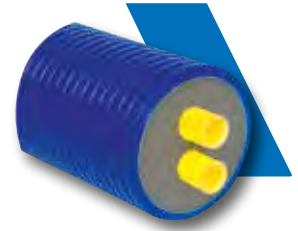
Pipe	Part Number	Part Number	Part Number	Ø male thread	Ø external Pipe mm	Part Number
M9040CWI	MS9040	MG901840	MJ3415440/37	1.1/4"	40/3.7	MFP54
M12540CWI	MS12540	MG1254063	MJ3415440/37	1.1/4"	40/3.7	MFP54
M12550CWI	MS12550	MG1254063	MJ3416450/46	1.1/2"	50/4.6	MFP64
M12563CWI	MS12563	MG1254063	MJ341263/58	2"	63/5.8	MFP2
M16075CWI	MS16075	MG1606390	MJ34121275/68	2.1/2"	75/6.8	MFP212
M16090CWI	MS16090	MG1606390	MJ341390/82	3"	90/8.2	MFP3

(*) Alternatively Shrink cap Serie MH

MICROFLEX DUO HEATING AND AIR CONDITIONING

Microflex pre-insulated flexible piping for heating and air conditioning systems with two internal pipes in PEX-a SDR11 with oxygen diffusion barrier (DIN 4726), suitable for fluids at temperatures of **-10÷95°C** and pressures up to **6 bar, in accordance with EN ISO 15875.**

Multi-layer thermal insulation in CFC-free expanded PEX cross-linked polyethylene with closed-cell structure. Double-wall corrugated outer casing in PE-HD high-density polyethylene. Supplied in lengths to customer specification. Maximum length 100m.



Part Number	Pipe PEX -a Ø external thickness mm	DN	Ø outside casing mm	Weight kg/m	Bending radius cm	PN
MD16025CWI	25/2.3	20	160	2,21	50	6
MD16032CWI	32/2.9	25	160	2,41	50	6
MD16040CWI	40/3.7	32	160	2,63	60	6
MD20050CWI	50/4.6	40	200	4,03	80	6
MD20063CWI	63/5.8	50	200	4,64	120	6

ACCESSORIES



Pipe	Dust caps	EPDM end caps	Fitting MJ341		Fix point	
	Part Number	Part Number	Part Number	Ø male thread	Ø external Pipe mm	Part Number
MD16025CWI	MSD16025	MGD1602550	MJ3413425/23	3/4"	25/2.3	MFP34
MD16032CWI	MSD16032	MGD1602550	MJ3414432/29	1"	32/2.9	MFP44
MD16040CWI	MSD16040	MGD1602550	MJ3415440/37	1.1/4"	40/3.7	MFP54
MD20050CWI	MSD20050	MGD2004063	MJ3416450/46	1.1/2"	50/4.6	MFP64
MD20063CWI	MSD20063	MGD2004063	MJ341263/58	2"	63/5.8	MFP2

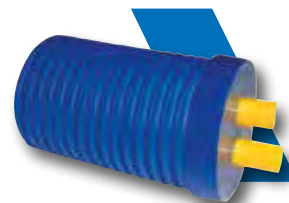
(*) Alternatively Shrink cap Serie MH

(**) Needed two fix points

MICROFLEX DUO PRIMO HEATING AND AIR CONDITIONING

Microflex pre-insulated flexible piping for heating and air conditioning systems with two internal pipes in PEX-a SDR11 with oxygen diffusion barrier (DIN 4726), suitable for fluids at temperatures of **-10÷95°C** and pressures up to **6 bar, in accordance with EN ISO 15875**.

Multi-layer thermal insulation in CFC-free expanded PEX cross-linked polyethylene with closed-cell structure. Double-wall corrugated outer casing in PE-HD high-density polyethylene. Supplied in lengths to customer specification. Maximum length 100m.



Part Number	Pipe PEX -a Ø external thickness mm	DN	Ø outside casing mm	Weight kg/m	Bending radius cm	PN
MD12525CWI	25/2.3	20	125	1,57	30	6
MD12532CWI	32/2.9	25	125	1,77	30	6
MD16050CWI	50/4.6	40	160	3,55	50	6

ACCESSORIES



Pipe	Dust caps	EPDM end caps	Fitting MJ341		Fix point	
	Part Number	Part Number	Part Number	Ø male thread	Ø external Pipe mm	Part Number
MD12525CWI	MSD12525	MGD1251832	MJ3413425/23	3/4"	25/2.3	MFP34
MD12532CWI	MSD12532	MGD1251832	MJ3414432/29	1"	32/2.9	MFP44
MD16050CWI	MSD16050	MGD1602550	MJ3416450/46	1.1/2"	50/4.6	MFP64

(*) Alternatively Shrink caps Serie MH

(**) Needed two fix points

MICROFLEX QUADRO FOR HEATING, AIR CONDITIONING AND DHW

Microflex pre-insulated flexible piping for heating, air conditioning and domestic water systems, with four internal pipes in PEX-a, **in accordance with EN ISO 15875:**

- two SDR11 pipes with oxygen diffusion barrier (DIN 4726), suitable for fluids at temperatures of -10÷95°C and pressures up to 6 bar
- two SDR7,4 pipes, suitable for water up to 95°C and pressures up to 10 bar.

Multi-layer thermal insulation in CFC-free expanded PEX cross-linked polyethylene with closed-cell structure. Double-wall corrugated outer casing in PE-HD high-density polyethylene. Supplied in lengths to customer specification. Maximum length 100m.



Part Number	Pipe PEX -a Ø external thickness mm	DN	Ø outside casing mm	Weight kg/m	Bending radius cm	PN
MQ16025C2520SWI	2x25/2.3	20	160	2,40	60	6
	1x25/3.5	20				10
	1x20/2.8	15				10
MQ16032C2520SWI	2x32/2.9	25	160	2,60	60	6
	1x25/3.5	20				10
	1x20/2.8	15				10
MQ16032C3225SWI	2x32/2.9	25	160	2,70	60	6
	1x32/4.4	23				10
	1x25/3.5	20				10

ACCESSORIES



Pipe	Dust caps	EPDM end caps	Fitting MJ341		Fix point	
	Part Number	Part Number	Part Number	Ø male thread	Ø external Pipe mm	Part Number
MQ16025C2520SWI	MSQ160252520	MGQ1601832	MJ3413425/23	3/4"	25/2.3	MFP34
			MJ3413425/35	3/4"	25/3.5	MFP34
			MJ3413420/28	3/4"	20/2.8	MFP34
MQ16032C2520SWI	MSQ160322520	MGQ1601832	MJ3414432/29	1"	32/2.9	MFP44
			MJ3413425/35	3/4"	25/3.5	MFP34
			MJ3413420/28	3/4"	20/2.8	MFP34
MQ16032C3225SWI	MSQ160323225	MGQ1601832	MJ3414432/29	1"	32/2.9	MFP44
			MJ3414432/44	1"	32/4.4	MFP44
			MJ3413425/35	3/4"	25/3.5	MFP34

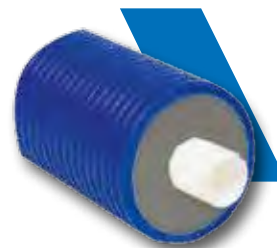
(*) Alternatively Shrink caps Serie MH

(**) Needed two fix points

MICROFLEX UNO FOR DOMESTIC WATER

Microflex pre-insulated flexible piping for domestic water systems with single internal pipe in PEX-a SDR7,4 suitable for water up to **95°C** and pressures up to **10 bar in accordance with EN ISO 15875**. Multi-layer thermal insulation in CFC-free expanded PEX cross-linked polyethylene with closed-cell structure free from CFC. Double-wall corrugated outer casing in PE-HD high-density polyethylene.

Supplied in lengths to customer specification. Maximum length 100m.

**3**

Part Number	Pipe PEX -a Ø external thickness mm	DN	Ø outside casing mm	Weight kg/m	Bending radius cm	PN
M7525SWI	25/3.5	20	75	0,75	20	10
M9032SWI	32/4.4	23	90	1,12	25	10
M12540SWI	40/5.5	32	125	1,89	40	10
M12550SWI	50/6.9	40	125	2,19	50	10
M12563SWI	63/8.7	50	125	2,59	55	10

ACCESSORIES

Pipe	Dust caps	EPDM end caps	Fitting MJ341		Fix point	
	Part Number	Part Number	Part Number	Ø male thread	Ø external Pipe mm	Part Number
M7525SWI	MS7525	MG751832	MJ3413425/35	3/4"	25/3.5	MFP34
M9032SWI	MS9032	MG901840	MJ3414432/44	1"	32/4.4	MFP44
M12540SWI	MS12540	MG1254063	MJ3415440/55	1.1/4"	40/5.5	MFP54
M12550SWI	MS12550	MG1254063	MJ3416450/69	1.1/2"	50/6.9	MFP64
M12563SWI	MS12563	MG1254063	MJ341263/87	2"	63/8.7	MFP2

(*) Alternatively Shrink caps Serie MH

MICROFLEX DUO FOR DOMESTIC WATER

Microflex pre-insulated flexible piping for domestic water systems with two internal pipes in PEX-a SDR7.4 suitable for water up to **95°C** and pressures up to **10 bar in accordance with EN ISO 15875**. Multi-layer thermal insulation in CFC-free expanded PEX cross-linked polyethylene with closed-cell structure free from CFC.

Double-wall corrugated outer casing in PE-HD high-density polyethylene. Supplied in lengths to customer specification. Maximum length 100m.



Part Number	Pipe PEX -a Ø external thickness mm	DN	Ø outside casing mm	Weight kg/m	Bending radius cm	PN
MD16025SWI	2x25/3.5	20	160	2,35	50	10
MD1603225SWI	1x32/4.4 1x25/3.5	23 20	160	5,50	50	10
MD1604025SWI	1x40/5.5 1x25/3.5	32 20	160	2,71	60	10
MD1605025SWI	1x50/6.9 1x25/3.5	40 20	160	2,89	60	10
MD1605032SWI	1x50/6.9 1x32/4.4	40 23	160	3,04	60	10

ACCESSORIES



Pipe	Dust caps	EPDM end caps	Fitting MJ341		Fix point	
	Part Number	Part Number	Part Number	Ø male thread	Ø external Pipe mm	Part Number
MD16025SWI	MSD16025	MGD1602550	MJ3413425/35	3/4"	2x25/3.5	MFP34
MD1603225SWI	MSD1603225	MGD1602550	MJ3414432/44	1"	1x32/4.4	MFP44
			MJ3413425/35	3/4"	1x25/3.5	MFP34
MD1604025SWI	MSD1604025	MGD1602550	MJ3415440/55	1.1/4"	1x40/5.5	MFP54
			MJ3413425/35	3/4"	1x25/3.5	MFP34
MD1605025SWI	MSD1605025	MGD1602550	MJ3416450/69	1.1/2"	1x50/6,9	MFP64
			MJ3413425/35	3/4"	1x25/3,5	MFP34
MD1605032SWI	MSD1605032	MGD1602550	MJ3416450/69	1.1/2"	1x50/6.9	MFP64
			MJ3414432/44	1"	1x32/4.4	MFP44

(*) Alternatively Shrink caps Serie MH

(**) Needed two fix points

MICROFLEX DUO PRIMO FOR DOMESTIC WATER

Microflex pre-insulated flexible piping for domestic water systems with two internal pipes in PEX-a SDR7.4 suitable for water up to **95°C** and pressures up to **10 bar**, in accordance with **EN ISO 15875**. Multi-layer thermal insulation in CFC-free expanded PEX cross-linked polyethylene with closed-cell structure.

Double-wall corrugated outer casing in PE-HD high-density polyethylene.

Supplied in lengths to customer specification. Maximum length 100m.



Part Number	Pipe PEX -a Ø external thickness mm	DN	Ø outside casing mm	Weight kg/m	Bending radius cm	PN
MD1252520SWI	25/3.5 20/2.8	20 15	125	1,65	30	10
MD1253225SWI	32/4.4 25/3.5	23 20	125	2	30	10

ACCESSORIES

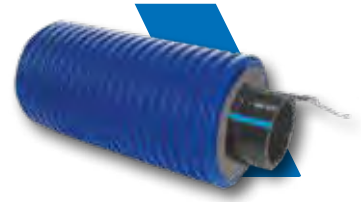


Pipe	Dust caps	EPDM end caps	Fitting MJ341		Fix point	
	Part Number	Part Number	Part Number	Ø male thread	Ø external Pipe mm	Part Number
MD1252520SWI	MSD1252520	MGD1251832	MJ3413425/35	3/4"	25/3.5	MFP34
			MJ3413420/28	3/4"	20/2.8	MFP34
MD1253225SWI	MSD1253225	MGD1251832	MJ3414432/44	1"	32/4.4	MFP34
			MJ3413425/35	3/4"	25/3.5	MFP44

(*) Alternatively Shrink caps Serie MH

MICROFLEX COOL UNO WITH HEATING CABLE

Microflex pre-insulated flexible piping **with self-regulating heating cable** (10 W/m) for domestic water systems with single internal pipe in PE-HD SDR11 suitable for potable water up to **25°C** and pressures up to **16 bar, in accordance with EN 12201**. Multi-layer thermal insulation in CFC-free expanded PEX cross-linked polyethylene with closed-cell structure. Double-wall corrugated outer casing in PE-HD high-density polyethylene. Supplied in lengths to customer specification. Maximum length 100m.



Part Number	Pipe PEX -a Ø external thickness mm	DN	Ø outside casing mm	Weight kg/m	Bending radius cm	PN
MV7532PEWI	32/2.9	25	75	0,84	20	16
MV9040PEWI	40/3.7	32	90	1,20	30	16
MV12550PEWI	50/4.6	40	125	2,00	40	16
MV12563PEWI	63/5.8	50	125	2,25	50	16
MV16075PEWI	75/6.8	65	160	3,30	75	16
MV16090PEWI	90/8.2	75	160	3,95	100	16
MV200110PEWI	110/1.0	90	200	5,84	120	16
MV200125PEWI	125/11.4	100	200	6,10	140	16

ACCESSORIES



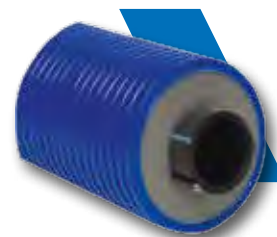
Dust caps EPDM end caps Fitting MJ341

Pipe	Part Number	Part Number	Part Number	Ø male thread	Ø external Pipe mm
M9032PEWI	MS7532	MG751832	MJ3414432/29	1"	32/2.9
M9040PEWI	MS9040	MG901840	MJ3415440/37	1.1/4"	40/3.7
M12550PEWI	MS12550	MG1254063	MJ3416450/46	1.1/2"	50/4.6
M12563PEWI	MS12563	MG1254063	MJ341263/58	2"	63/5.8
M16075PEWI	MS16075	MG1606390	MJ34121275/68	2.1/2"	75/6.8
M16090PEWI	MS16090	MG1606390	MJ341390/82	3"	90/8.2
M200110PEWI	MS200110	MG20075125	MJ3414110/10	4"	110/1.0
M200125PEWI	MS200125	MG20075125	MJ3414125/114	4"	125/11.4

(*) Alternatively Shrink caps Serie MH

MICROFLEX COOL UNO

Microflex pre-insulated flexible piping for domestic water systems with single internal pipe in PE-HD SDR11 suitable for potable water up to **25°C** and pressures up to **16 bar in accordance with EN ISO 12201**. Multi-layer thermal insulation in CFC-free expanded PEX cross-linked polyethylene with closed-cell structure. Double-wall corrugated outer casing in PE-HD high-density polyethylene. Supplied in lengths to customer specification. Maximum length 100m.



Part Number	Pipe PEX -a Ø external thickness mm	DN	Ø outside casing mm	Weight kg/m	Bending radius cm	PN
M9032PEWI	32/2.9	25	90	0,78	25	16
M9040PEWI	40/3.7	32	90	1	50	16
M12550PEWI	50/4.6	40	125	1,4	50	16
M12563PEWI	63/5.8	50	125	1,8	50	16
M16075PEWI	75/6.8	65	160	2,5	55	16
M16090PEWI	90/8.2	75	160	3,3	55	16
M200110PEWI	110/1.0	90	200	5,74	120	16

ACCESSORIES



Pipe	Dust caps	EPDM end caps	Fitting MJ341		
	Part Number	Part Number	Part Number	Ø male thread	Ø external Pipe mm
M9032PEWI	MS7532	MG751832	MJ3414432/29	1"	32/2.9
M9040PEWI	MS9040	MG901840	MJ3415440/37	1.1/4"	40/3.7
M12550PEWI	MS12550	MG1254063	MJ3416450/46	1.1/2"	50/4.6
M12563PEWI	MS12563	MG1254063	MJ341263/58	2"	63/5.8
M16075PEWI	MS16075	MG1606390	MJ34121275/68	2.1/2"	75/6.8
M16090PEWI	MS16090	MG1606390	MJ341390/82	3"	90/8.2
M200110PEWI	MS200110	MG20075125	MJ3414110/10	4"	110/1.0

(*) Alternatively Shrink caps Serie MH

FITTINGS FOR 6 BAR HEATING AND AIR CONDITIONING PIPES AND 16 BAR COOL PIPES

MJ341

DZR threaded end fitting for Microflex PN6 pipes and Microflex COOL PN 16 pipes.

Part Number	Ø Pipe / thickness mm	Ø male thread
MJ3413425/23	25/2.3	3/4"
MJ3414432/29	32/2.9	1"
MJ3415440/37	40/3.7	1.1/4"
MJ3416450/46	50/4.6	1.1/2"
MJ341263/58	63/5.8	2"
MJ34121275/68	75/6.8	2.1/2"
MJ341390/82	90/8.2	3"
MJ3414110/10	110/10	4"
MJ3414125/114	125/11.4	4"



MJ270

Straight fitting for PEX-a x PEX-a pipes in DZR brass for Microflex PN6 pipes and Microflex COOL PN 16 pipes.

Part Number	Ø Pipe/thickness mm
MJ27025/23	25/2.3
MJ27032/29	32/2.9
MJ27040/37	40/3.7
MJ27050/46	50/4.6
MJ27063/58	63/5.7
MJ27075/68	75/6.9
MJ27090/82	90/8.2
MJ270110/10	110/10
MJ270125/114	125/11.4



MJ90

Elbow fitting for PEX-a x PEX-a pipes in DZR brass for Microflex PN6 pipes and Microflex COOL PN 16 pipes.

Part Number	Ø Pipe/thickness mm
MJ9025/23	25/2.3
MJ9032/29	32/2.9
MJ9040/37	40/3.7
MJ9050/46	50/4.6
MJ9063/58	63/5.8
MJ9075/68	75/6.8
MJ9090/82	90/8.2
MJ90110/10	110/10
MJ90125/114	125/11.4



Product composed of parts to be assembled

MJ130

T-fitting for PEX-a x PEX-a x PEX-a pipes in DZR brass for Microflex PN6 pipes and Microflex COOL PN 16 pipes.

Part Number	Ø pipe	Ø Pipe/thickness mm
MJ13025/23	25-25-25	25/2,3
MJ13032/29	32-32-32	32/2,9
MJ1304032/37	40-32-40	40/3,7+32/2,9
MJ13040/37	40-40-40	40/3,7
MJ1305040/46	50-40-50	50/4,6+40/3,7
MJ13050/46	50-50-50	50/4,6
MJ1306350/58	63-50-63	63/5,8+50/4,6
MJ13063/58	63-63-63	63/5,8
MJ13075/68	75-75-75	75/6,8
MJ13090/82	90-90-90	90/8,2
MJ130110/110	110-110-110	110/10
MJ130125/114	125-125-125	125/11.4

Product composed of parts to be assembled

**3****SANITARY PIPE FITTINGS - 10 BAR****MJ341**

DZR brass threaded end fitting for Microflex PN10 pipes.

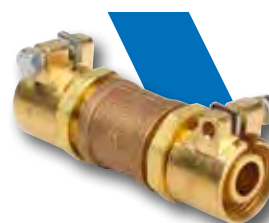
Part Number	Ø Pipe/thickness mm	Ø male thread
MJ3413420/28	20/2.8	3/4"
MJ3413425/35	25/3.5	2/4"
MJ3414432/44	32/4.4	1"
MJ3415440/55	40/5.5	1.1/4"
MJ3416450/69	50/6.9	1.1/2"
MJ341263/87	63/8.7	2.1/2"

**MJ270**

Straight fitting for PEX-a x PEX-a pipes in DZR brass for Microflex PN10 pipes.

Part Number	Ø Pipe/thickness mm
MJ27025/35	25/3.5
MJ27032/44	32/4.4
MJ27040/55	40/5.5
MJ27050/69	50/6.9
MJ27063/87	63/8.7

Product composed of parts to be assembled

**MJ90**

Elbow fitting for PEX-a x PEX-a pipes in DZR brass for Microflex PN10 pipes.

Part Number	Ø Pipe/thickness mm
MJ9025/35	25/3.5
MJ9032/44	32/4.4
MJ9040/55	40/5.5
MJ9050/69	50/6.9
MJ9063/87	63/8.7

Product composed of parts to be assembled



MJ130

T-fitting for PEX-a x PEX-a pipes in DZR brass for Microflex PN10 pipes.

Part Number	Ø pipe	Ø Pipe/thickness mm
MJ13025/35	25-25-25	25/3,5
MJ13032/44	32-32-32	32/4,4
MJ1304032/55	40-32-40	40/5,5+32/3,5
MJ13040/55	40-40-40	40/5,5
MJ13050/69	50-50-50	50/6,9
MJ1306350/87	63-50-63	63/8,7+50/6,9
MJ13063/87	63-63-63	63/8,7



Product composed of parts to be assembled

ACCESSORIES

8065

Copper-based anti-seize lubricant for all MJ series fittings.

Part Number	Operating temperature	Stick g
LOCTITE8065	-30÷980°C	20



MFP

Bronze threaded fitting for creating a fixed point for absorbing expansion forces on Microflex PN 6/10/16 pipes.

Part Number	DN
MFP34	3/4"
MFP44	1"
MFP54	1.1/4"
MFP64	1.1/2"
MFP2	2"
MFP212	2.1/2"
MFP3	3"
MFP4	4"



VW270

Bronze F-F threaded sleeve - PN 6/10/16.

Part Number	DN
VW27034	3/4"
VW27044	1"
VW27054	1.1/4"
VW27064	1.1/2"
VW2702	2"
VW270212	2.1/2"
VW2703	3"
VW2704	4"



VW90

Bronze F-F threaded elbow - PN 6/10/16.



3

Part Number	DN
VW9034	3/4"
VW9044	1"
VW9054	1.1/4"
VW9064	1.1/2"
VW902	2"
VW90212	2.1/2"
VW903	3"
VW904	4"

VW130

Bronze F-F threaded T-fitting - PN 6/10/16.



Part Number	DN
VW13034	3/4"
VW13044	1"
VW13054	1.1/4"
VW13064	1.1/2"
VW1302	2"
VW130212	2.1/2"
VW1303	3"
VW1304	4"

VW241

DZR brass M-F threaded reduction - PN 6/10/16.



Part Number	Thread M	Thread F
VW2414434	1"	3/4"
VW2415434	1.1/4"	3/4"
VW2415444	1.1/4"	1"
VW2416434	1.1/2"	3/4"
VW2416444	1.1/2"	1"
VW2416454	1.1/2"	1.1/4"
VW241234	2"	3/4"
VW241244	2"	1"
VW241254	2"	1.1/4"
VW241264	2"	1.1/2"
VW24121254	2.1/2"	1.1/4"
VW24121264	2.1/2"	1.1/2"
VW2412122	2.1/2"	2"
VW241344	3"	1"
VW241354	3"	1.1/4"
VW241364	3"	1.1/2"
VW24132	3"	2"
VW2413212	3"	2.1/2"
VW24142	4"	2"
VW2414212	4"	2.1/2"
VW24143	4"	3"

VW280

DZR brass M-M threaded nipple - PN 6/10/16.

Part Number	DN
VW28034	3/4"
VW28044	1"
VW28054	1.1/4"
VW28064	1.1/2"
VW2802	2"
VW280212	2.1/2"
VW2803	3"
VW2804	4"



VW290

DZR brass M-M threaded stop - PN 6/10/16.

Part Number	DN
VW29034	3/4"
VW29044	1"
VW29054	1.1/4"
VW29064	1.1/2"
VW2902	2"
VW290212	2.1/2"
VW2903	3"
VW2904	4"



MDF

Galvanised steel threaded flange - PN 6/10.

Part Number	DN
MDF34	3/4"
MDF44	1"
MDF54	1.1/4"
MDF64	1.1/2"
MDF2	2"
MDF212	2.1/2"
MDF3	3"
MDF4	4"



WATERPROOFING ACCESSORIES

MK - UNO

Shrink caps to prevent water from entering pipes
Microflex UNO.

Part Number	Ø outside casing mm	Ø Pipe mm
MK2000	75	25
MK2100	75 / 90	32 o 40
MK2200	125	40 o 50
MK2400	125	63
MK2340	160	40 o 50
MK2500	160	da 63 a 90
MK2600	200	da 75 a 125



MK - DUO

Shrink caps to prevent water from entering pipes.
Microflex DUO.



Part Number	Ø outside casing mm	Ø Pipe mm
MK3280	125	2 x 32
MK3350-01	160	2 x 25 o 2 x 32
MK3350-02	160	2 x 40
MK3350-01	160	1 x 32 / 1 x 25
MK3350-02	160	1 x 40 / 1 x 25
MK3360-01	160	1 x 50 / 1 x 25
MK3350-03	160	2 x 50
MK3350-03	200	2 x 50
MK3350-05	200	2 x 63

LS

MICRO SEAL wall feed-through sealing sleeves.

Part Number	Ø outside casing mm	length bolts included	Ø wall opening mm	Torque Nm
9LS200	75	75	100 - 102	min. 3,0 - max.3,5
7LS300	75	100	110 - 115	min. 9,0 - max.11,0
8LS300	90	100	128 - 132	min. 9,0 - max.11,0
9LS315	90	100	134 - 136	min. 10,0 - max.12,0
7LS475	125	135	194 - 210	min. 26,0 - max.32,5
6LS325	125	125	175 - 180	min. 11,8 - max.14,5
7LS325	160	125	209 - 212	min. 11,8 - max.14,5
7LS400	160	135	240 - 245	min. 30,0 - max.37,0
13LS300	160	100	200 - 202	min. 9,0 - max.11,0
9LS325	200	125	250 - 255	min. 11,8 - max.14,5
8LS400	200	135	275 - 282	min. 30,0 - max.37,0
10LS575	200	145	301 - 320	min. 47,0 - max.61,0



TECHNICAL NOTE



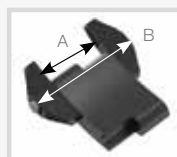
1. Drill a hole according to minimum and maximum dimensions.



2. Fit the LS sleeve around the outer casing. Make sure that there is a straight line of at least 60 cm before and after the sleeve. Bends are not allowed.



3. Slide the pipe complete with sleeve into the through-hole in the wall.

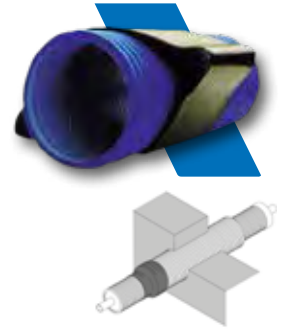


4. Tightening the bolts of the evenly spaced links uniformly compresses the pressure plates, thus filling the annular space between the pipe and the through-hole in the wall.

MMDV

MMDV wall feed-through sleeves.

Part Number	Ø outside casing mm	external Ø wall feed-trough pipe	ø wall opening mm
MMDV75	75	110	210
MMDV90	90	110	210
MMDV125	125	160	260
MMDV160	160	200	300
MMDV200	200	235	350



MHM

MHM shrink sleeve for repairing the outer casing of Microflex pipes.

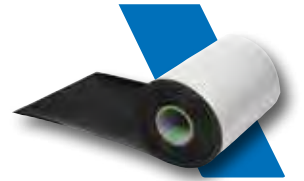
Part Number	Ø outside casing mm	ø wall opening mm
MHM75/90	75-90	220 mm
MHM125	125	220 mm
MHM160	160	220 mm
MHM200	200	220 mm
MHM235	200	220 mm



MH

Tape for repairing the outer casing of Microflex pipes.

Part Number	Description	Lenght m	Band width mm
MHB200	Shrink sleeve tape	10	200
MHK150	Coating tape applicable to cold	10	150



MTR

Warning tape to indicate the location of underground Microflex pipes during excavation work.

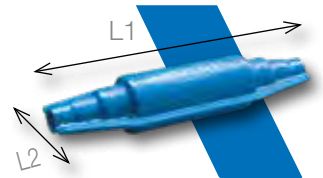
Part Number	Description	Size
MTRW	Pipe for water (red)	250 x 0,08
MTRB	Pipe for heating cable for water acqua (blue)	250 x 0,08



MM

Insulated I-piece kit for straight, underground joints, complete with insulation material, sealant and stainless steel fasteners.

Part Number	Ø outside casing mm	L1 mm	L2 mm
MM129075	125/90/75	960	290
MM201612	200/160/125	1170	345



MM

Insulation kit I-variant for straight, underground joints, complete with insulation material and shrink sleeves.

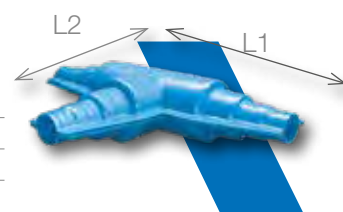
Part Number	Ø outside casing mm	Lenght mn
MM75/90	75/90	700
MM125	125	850
MM160	160	1000
MM200	200	1000



MT

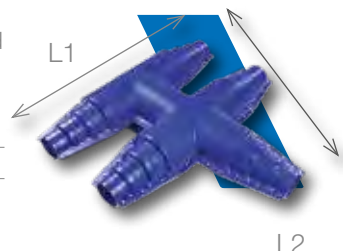
Insulated T-piece kit for underground T-joints, complete with insulation material, sealant and stainless steel fasteners.

Part Number	Ø outside casing mm	L1 mm	L2 mm
MT129075	125/90/75	960	590
MT201612	200/160/125	1170	750


3
MDT

Insulated T-piece kit for underground double T-joints, complete with insulation material, sealant and stainless steel fasteners.

Part Number	Ø outside casing mm	L1 mm	L2 mm
MDT201612	200/160/125	1200	1200


MH

Insulated elbow kit for underground elbow-joints, complete with insulation material, sealant and stainless steel fasteners.

Part Number	Ø outside casing mm	LxWXH (mm)
MH201612	200/160/125	740x740x270


MBR

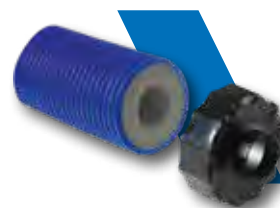
Insulated trouser piece kit for joining two single pipes to one double pipe, complete with insulation material, sealant and stainless steel fasteners.

Part Number	Ø outside casing mm	LxWXH (mm)	Note
MBR201612	200/160/125	1170x460x230	IN: 200/160/125 OUT: 160/125


MR

Reduction for using pipes with outer casing diameter of less than 160 mm with insulated-piece kit MM201612 and insulated T-piece kit MT201612. Length 1m.

Part Number	Ø outside casing mm
MR24116075	Riduce da 160 a 75 mm


MIS

Inspection chamber with six connection points for creating inspectable underground branches. Complete with sealant and stainless steel fasteners.

Part Number	Ø outside casing mm	Ø Inspector chamber mm	Height mm
MIS	200/160/125	810	770


MHM

Shrink sleeves for inspection chambers.

Part Number	Ø outside casing mm	Length mm
MHM125	125	220
MHM160	160	220
MHM235	200	220

