

# Chapter 4

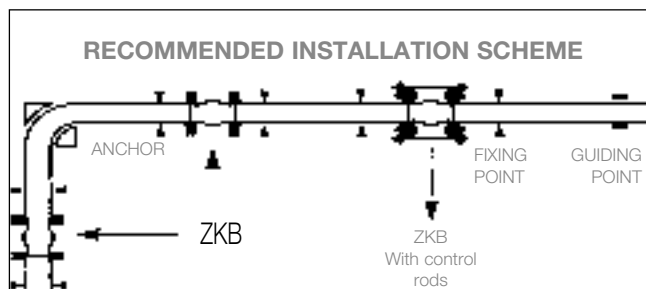
## Rubber Expansion Joints



## Chapter 4

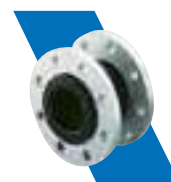
# Rubber Expansion Joints

Mounted on piping installations, the ZKT joint absorbs expansions, contractions, oscillations and vibrations, diminishes hammering, reduces noise and prevents electric currents from spreading.



### ZKB

PRESSURE PFA/PS in bar - See pressure/θ curve  
 Rubber expansion joint with galvanised steel flanges.  
 Stainless steel flanges : consult us:  
 θ 28" to 36" : consult us  
 OPTION : with vacuum ring



Part Number EPDM	Part Number NBR	DN "	PFA mm water	PS				Cat	UV	
				L1	L2	G1	G2			
<b>PN10 flanges</b>										
149B 5141 C	149B 5141 N	1 1/4	32	16	16	16	0,5	16	3.3	1
149B 5142 C	149B 5142 N	1 1/2	40	16	16	16	0,5	16	3.3	1
149B 5143 C	149B 5143 N	2	50	16	16	16	0,5	16	3.3	1
149B 5144 C	149B 5144 N	2 1/2	65	16	16	16	0,5	15	3.3	1
149B 5145 C	149B 5145 N	3	80	16	16	16	0,5	12	3.3	1
149B 5146 C	149B 5146 N	4	100	16	16	16	0,5	10	3.3	1
149B 5147 C	149B 5147 N	5	125	16	16	16	0,5	8	3.3	1
149B 5148 C	149B 5148 N	6	150	16	13	16	0,5	6	3.3	1
149B 5149 C	149B 5149 N	8	200	10	10	10	0,5	5	3.3	1
149B 5150 C	149B 5150 N	10	250	10	8	10	0,5	4	3.3	1
149B 5151 C	149B 5151 N	12	300	10	6	10	0,5	3	3.3	1
149B 5152 C	149B 5152 N	14	350	8	5	8	0,5	2	3.3	1
149B 5153 C	149B 5153 N	16	400	8	5	8	0,5	2	3.3	1
149B 5154 C	149B 5154 N	18	450	8	4	8	0,5	2	3.3	1
149B 5155 C	149B 5155 N	20	500	8	4	8	0,5	2	3.3	1
149B 5156 C	149B 5156 N	24	600	8	3	8	0,5	1	3.3	1
<b>PN16 flanges</b>										
149B 008285	149B 5007 N	8	200	16	10	16	0,5	5	3.3	1
149B 008287	149B 5008 N	10	250	16	8	16	0,5	4	3.3	1
149B 008291	149B 5009 N	12	300	16	6	16	0,5	3	3.3	1
149B 008294	149B 5010 N	14	350	8	5	8	0,5	2	3.3	1
149B 008301	149B 5011 N	16	400	8	5	8	0,5	2	3.3	1
149B 008305	149B 5012 N	18	450	8	4	8	0,5	2	3.3	1
149B 008312	149B 5013 N	20	500	8	4	8	0,5	2	3.3	1
149B 008314	149B 5014 N	24	600	8	3	8	0,5	1	3.3	1

Dimensions at the end of the section.

**ZKT - female/female**

PRESSURE PFA/PS in bar - See pressure/θ curve

Rubber expansion joint with galvanised ductile iron union nut connections.

OPTION :

Bronze connection in case of electrolytic risk.



Part Number EPDM	Part Number NBR	DN "	PFA water	PS				Cat	UV
				L1	L2	G1	G2		
149B 5126	149B 5126 N	3/4	10	10	10	10	10	3.3	1
149B 5127	149B 5127 N	1	10	10	10	10	10	3.3	1
149B 5128	149B 5128 N	1 1/4	10	10	10	0,5	10	3.3	1
149B 5129	149B 5129 N	1 1/2	10	10	10	0,5	10	3.3	1
149B 5130	149B 5130 N	2	10	10	10	0,5	10	3.3	1
149B 5131	149B 5131 N	2 1/2	10	10	10	0,5	10	3.3	1
149B 5132	149B 5132 N	3	10	10	10	0,5	10	3.3	1

Dimensions at the end of the section.

**Control Rods for flanges PN10 and PN16**

Galvanised steel

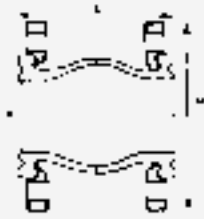
Control rods.

Part Number PN10	Part Number PN16	DN "	mm	UV
149B 5436	-	1 1/4	32	1
149B 5437	-	1 1/2	40	1
149B 5438	-	2	50	1
149B 5439	-	2 1/2	65	1
149B 5440	-	3	80	1
149B 5441	-	4	100	1
149B 5442	-	5	125	1
149B 5443	-	6	150	1
149B 5444	149B 0089 40	8	200	1
149B 5445	149B 0089 41	10	250	1
149B 5446	149B 0089 42	12	300	1
149B 5447	149B 0089 43	14	350	1
149B 5448	149B 0089 44	16	400	1
149B 5449	149B 0089 45	18	450	1
149B 5450	149B 0089 47	20	500	1
149B 5451	149B 0089 48	24	600	1



OVERALL DIMENSIONS & TECHNICAL INFORMATION

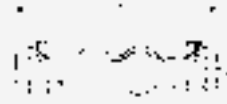
ZKB



Type ZKB with flanges

DN "	A mm	H mm	L mm	Kg
1 1/4	32	140	95	3,00
1 1/2	40	150	95	3,50
2	52	165	105	3,86
2 1/2	68	185	115	5,45
3	76	200	130	6,50
4	103	220	135	7,00
5	128	250	170	11,00
6	152	285	180	14,00
8	194	340	205	20,91
10	250	395	240	25,00
12	300	445	260	38,18
14	320	505	265	50,00
16	372	565	265	60,00
18	415	615	265	70,00
20	454	670	265	88,64
24	580	780	254	95,00

ZKT

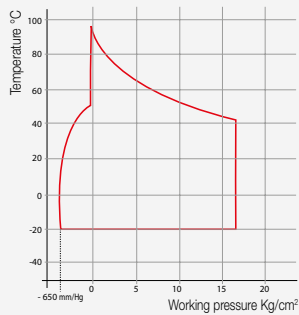


Type ZKT female/female

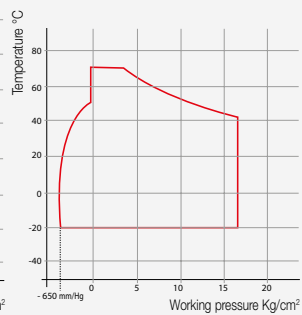
A		L mm	Kg
"	mm		
3/4	20	200	0,775
1	25	200	0,685
1 1/4	32	200	1,585
1 1/2	40	200	1,985
2	50	200	2,980
2 1/2	65	225	2,335
3	80	225	2,600

PRESSURE TEMPERATURE CURVES FOR WATER APPLICATION

EPDM



NBR





4