

BLÜCHER®

LINEA

Product Catalog

A Focus on Precision Engineering

“BLÜCHER® LINEA represents the perfect blend of form and function for sophisticated drainage solutions”.



[BLUCHERpipe.com](https://www.blucherpipe.com)

BLÜCHER®

A **WATTS** Brand



BLÜCHER® LINEA

is a streamlined and sleek drainage solution manufactured from 316 stainless steel which enables it to be used for both internal and external applications.

Combining modern aesthetics with robust functionality, this channel is designed to seamlessly integrate into various architectural environments, providing a clean and elegant look.

The modular system uses a variety of straight sections, 0.5m, 1m and 3m combined with “T” sections and 90 degree corners giving you the flexibility to achieve a contemporary appearance with easy installation.





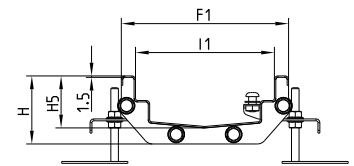
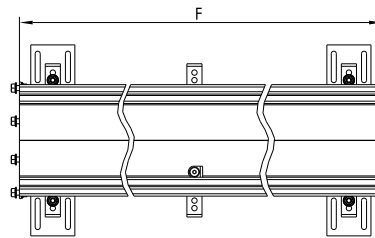
Features

- High-quality
- Modular
- Corrosion resistance
- Easy installation
- Stainless Steel AISI 316L / EN 1.4404 is selected as the standard offering due to the increased corrosion resistance over that of Stainless Steel AISI 304/EN 1.4301, and is perfectly suited to external surface water applications. If Stainless Steel AISI 304 / EN 1.4301 is required specify type no. without suffix S.
- Available in lengths:
500 mm (19 11/16") 1000 mm (39 3/8") 3000 mm (118 1/8")

BLÜCHER LINEA Product Catalog

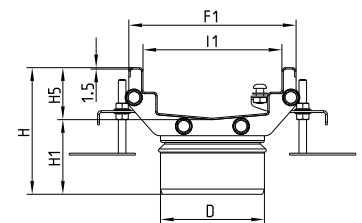
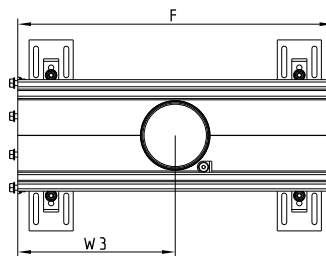
Channel Type 670.xxx Neutral

Model No.	F		F1		I1		H		H5		Weight	
	mm	in.	mm	in.	mm	in.	mm	in.	mm	in.	Kg	Lbs.
670.050.015.55 S	500	19 11/16	177	7	147	5 13/16	72	2 13/16	55	2 3/16	2.3	5.1
670.050.015.85 S	500	19 11/16	177	7	147	5 13/16	104	4 1/8	85	3 3/8	2.76	6.1
670.100.015.55 S	1000	39 3/8	177	7	147	5 13/16	72	2 13/16	55	2 3/16	4.45	9.8
670.100.015.85 S	1000	39 3/8	177	7	147	5 13/16	104	4 1/8	85	3 3/8	5.27	11.6
670.300.015.55 S	3000	118 1/8	177	7	147	5 13/16	72	2 13/16	55	2 3/16	11.73	25.9
670.300.015.85 S	3000	118 1/8	177	7	147	5 13/16	104	4 1/8	85	3 3/8	13.96	30.8



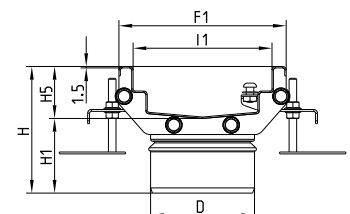
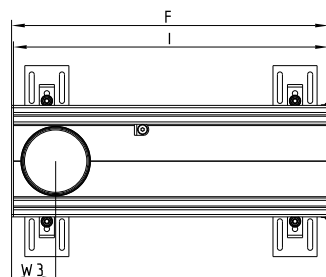
Channel Type 670.910 with Center Outlet

Model No.	D		F		F1		I1		H		H1		H5		W3		Weight	
	mm	in.	mm	in.	mm	in.	mm	in.	mm	in.	mm	in.	mm	in.	mm	in.	Kg	Lbs.
670.910.015.55 S	110	4 3/8	500	19 11/16	177	7	147	5 13/16	134	5 1/4	79	3 1/8	55	2 3/16	250	9 7/8	2.54	5.6
670.910.015.85 S	110	4 3/8	500	19 11/16	177	7	147	5 13/16	164	6 1/2	79	3 1/8	85	3 3/8	250	9 7/8	3.45	7.6



Channel Type 670.900 with End Outlet

Model No.	D		F		F1		I		I1		H		H1		H5		W3		Weight	
	mm	in.	mm	in.	mm	in.	mm	in.	mm	in.	mm	in.	mm	in.	mm	in.	mm	in.	Kg	Lbs.
670.900.015.55 S	110	4 3/8	503	19 3/4	177	7	500	19 11/16	147	5 13/16	134	5 1/4	79	3 1/8	55	2 3/16	70	2 13/16	2.63	5.8
670.900.015.85 S	110	4 3/8	503	19 3/4	177	7	500	19 11/16	147	5 13/16	164	6 1/2	79	3 1/8	85	3 3/8	70	2 13/16	3.61	8

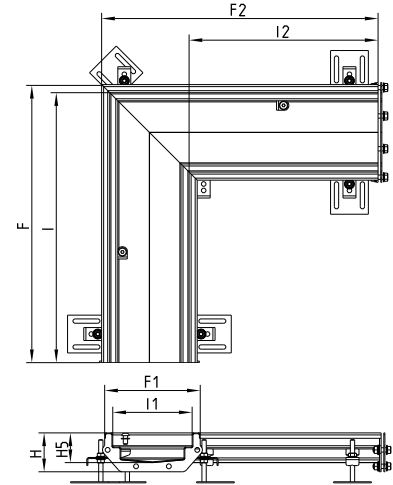


All dimensions in mm and inches. Includes legs, nuts, bolts, and gaskets as shown.
If Stainless Steel grade AISI 304 / EN 1.4301 is required specify type no. without suffix S.

BLÜCHER LINEA Product Catalog

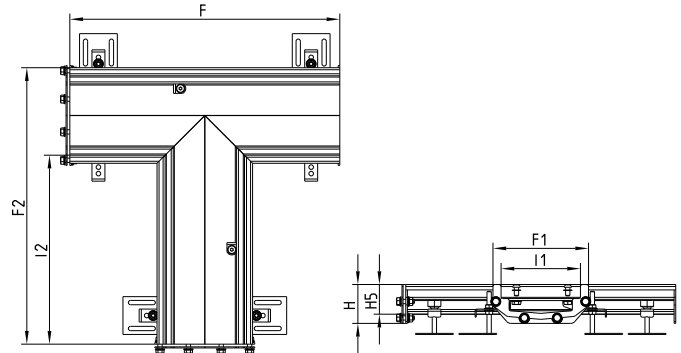
Channel Type 670.090.015 Corner

Model No.	F		F1		F2		I		I1		I2		H		H5		Weight	
	mm	in.	mm	in.	mm	in.	mm	in.	mm	in.	mm	in.	mm	in.	mm	in.	Kg	Lbs.
670.090.015.55 S	515	20 5/16	177	7	512	20 3/16	500	19 11/16	147	5 13/16	350	13 13/16	72	2 13/16	55	2 3/16	4.26	9.4
670.090.015.85 S	515	20 5/16	177	7	512	20 3/16	500	19 11/16	147	5 13/16	350	13 13/16	104	4 1/8	85	3 3/8	4.97	11



Channel Type 670.180 T-Section

Model No.	F		F1		F2		I1		I2		H		H5		Weight	
	mm	in.	mm	in.	mm	in.	mm	in.	mm	in.	mm	in.	mm	in.	Kg	Lbs.
670.180.015.55 S	500	19 11/16	177	7	512	20 3/16	147	5 13/16	350	13 13/16	72	2 13/16	55	2 3/16	3.82	8.4
670.180.015.85 S	500	19 11/16	177	7	512	20 3/16	147	5 13/16	350	13 13/16	104	4 1/8	85	3 3/8	5.01	11.1

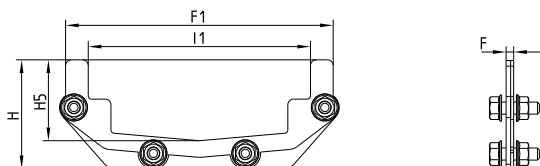


*All dimensions in mm and inches. Includes legs, nuts, bolts, and gaskets as shown.
If Stainless Steel grade AISI 304 / EN 1.4301 is required specify type no. without suffix S.*

BLÜCHER LINEA Product Catalog

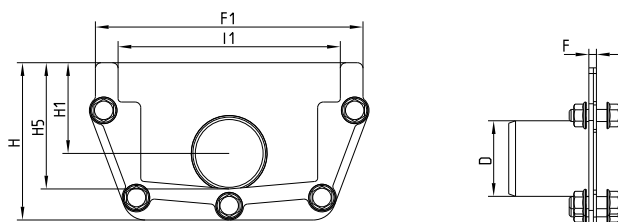
Channel Type 670.000 End Plate

Model No.	F		F1		I1		H		H5		Weight	
	mm	in.	mm	in.	mm	in.	mm	in.	mm	in.	Kg	Lbs.
670.000.015.55 S	5	3/16	177	7	147	5 13/16	72	2 13/16	55	2 3/16	0.4	0.9
670.000.015.85 S	5	3/16	177	7	147	5 13/16	104	4 1/8	85	3 3/8	0.55	1.2



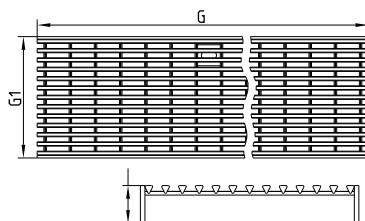
Channel Type 670.001 End Plate with Outlet

Model No.	D		F		F1		I1		H		H1		H5		Weight	
	mm	in.	mm	in.	mm	in.	mm	in.	mm	in.	mm	in.	mm	in.	Kg	Lbs.
670.001.015.85 S	50	2	5	3/16	177	7	147	5 13/16	104	4 1/8	60	2 3/8	85	3 3/8	0.57	1.3



Type 697.671.150 BLÜCHER LINEA Grating

Model No.	H		G		G1		EN1253		EN1433		Weight	
	mm	in.	mm	in.	mm	in.	Kg	Lbs.	Kg	Lbs.	Kg	Lbs.
697.671.150.34 S	25	1	349	13 11/16	144	5 11/16	R50 (3.33)	7.3	B125 (8.33)	18.4	1.78	3.9
697.671.150.49 S	25	1	499	19 11/16	144	5 11/16	R50 (3.33)	7.3	B125 (8.33)	18.4	2.53	5.6
697.671.150.99 S	25	1	998	39 5/16	144	5 11/16	R50 (3.33)	7.3	B125 (8.33)	18.4	5.05	11.1



Ordering Guide for Gratings	
Product Item	Gratings
Corner & T-Section	1 no. 499 mm / 19.7 in + 1 no. 349 mm / 13.7 in.
500 mm Long Items	1 no. 499 mm / 19.7 in.
1000 mm Channel Length	1 no. 998 mm / 39.3 in.
3000 mm Channel Length	3 no. 998 mm / 39.3 in.

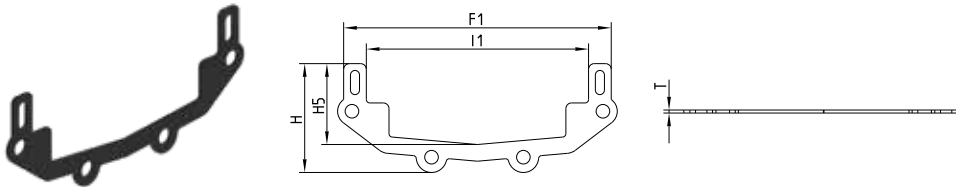
All dimensions in mm and inches. Includes legs, nuts, bolts, and gaskets as shown.
If Stainless Steel grade AISI 304 / EN 1.4301 is required specify type no. without suffix S.

BLÜCHER LINEA Product Catalog

Accessories

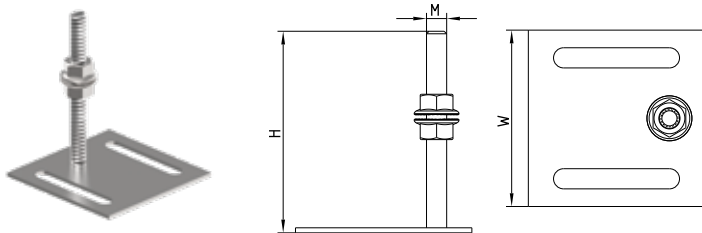
Type 670.EPDM Gasket

Model No.	F1		I1		H		H5		T		Weight	
	mm	in.	mm	in.	mm	in.	mm	in.	mm	in.	Kg	Lbs.
670.EPDM.015.55	177	7	147	5 13/16	72	2 13/16	54	2 1/8	2	1/16	0.01	0.02
670.EPDM.015.85	177	7	147	5 13/16	104	4 1/8	84	3 5/16	2	1/16	0.01	0.02



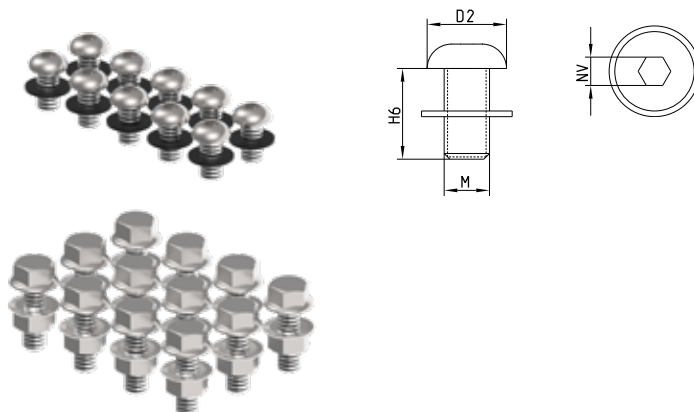
Type 670.080 Adjustable Leg

Model No.	H		M		W		Weight	
	mm	in.	mm	in.	mm	in.	Kg	Lbs.
670.080.001	80	3 3/16	8	5/16	70 x 70	2 13/16 x 2 13/16	0.1	0.2



Type 670.M8 Screws

Model No.	D2		H6		M		NV		Weight	
	mm	in.	mm	in.	mm	in.	mm	in.	Kg	Lbs.
670.M8.016 S	14	1/2	16	5/8	8	5/16	5	3/16	0.01	0.02
670.M8.025	18	11/16	25	1	8	5/16	14	1/2	0.03	0.07



*All dimensions in mm and inches. Includes legs, nuts, bolts, and gaskets as shown.
If Stainless Steel grade AISI 304 / EN 1.4301 is required specify type no. without suffix S.*

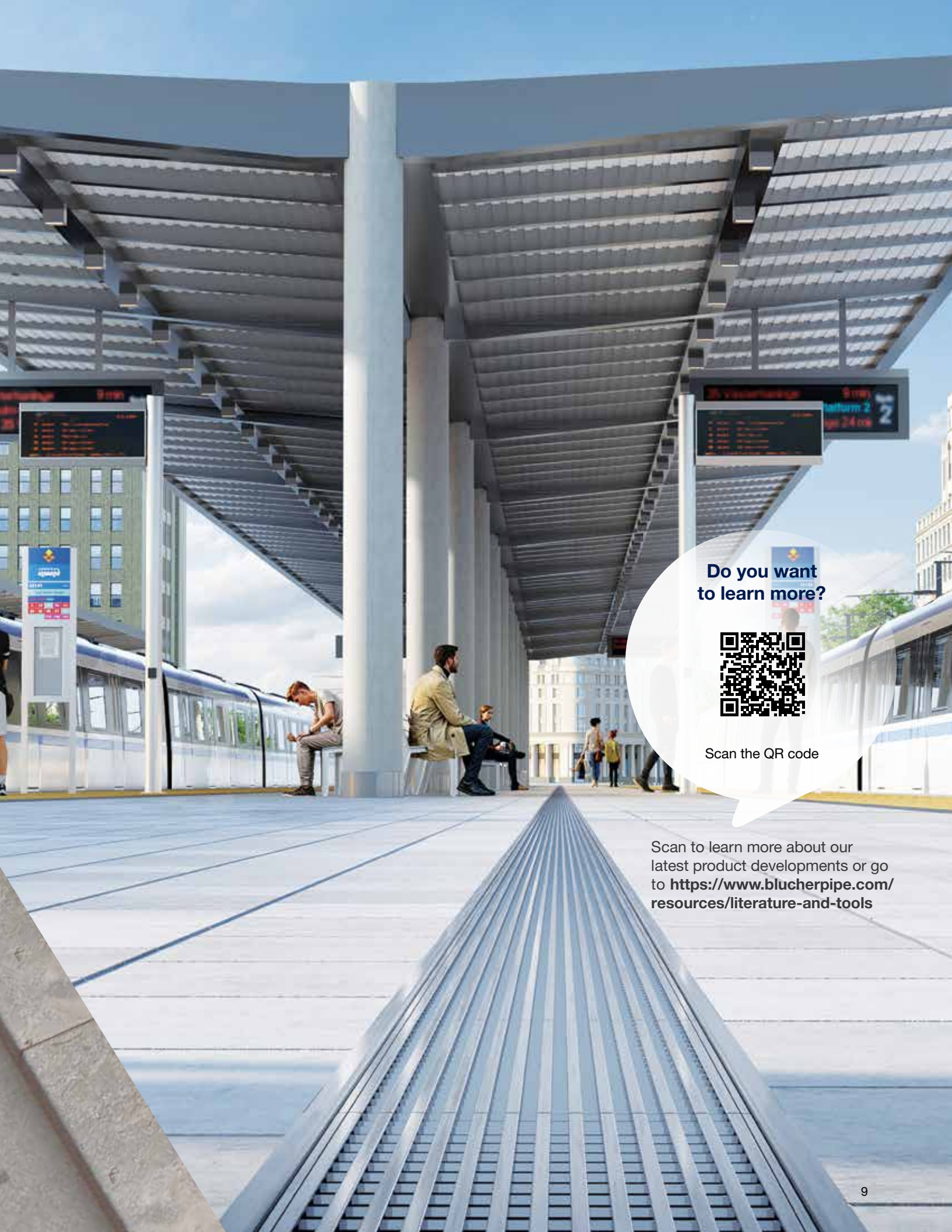


BLÜCHER® LINEA

is designed with ease of installation in mind. Its modular components can be quickly assembled and adjusted on-site, reducing installation time and labor costs.

The lightweight yet sturdy stainless steel parts allow for simple handling and alignment, while the system's versatile connections enable seamless integration with existing drainage set-ups.

With a straightforward installation process, BLÜCHER LINEA ensures hassle-free implementation, making it a preferred choice for contractors and architects looking for efficient, high-performance drainage solutions.



Do you want
to learn more?

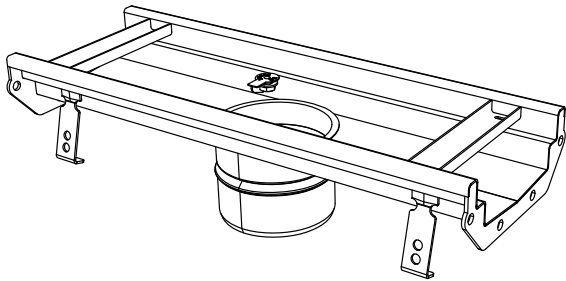


Scan the QR code

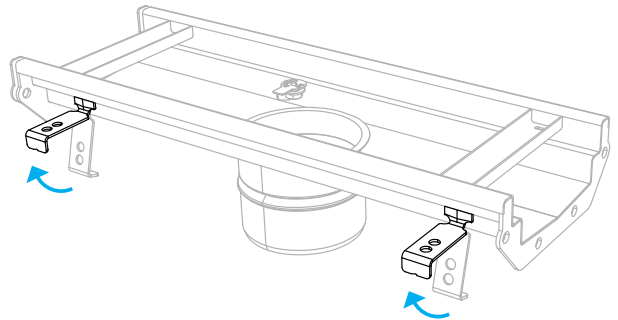
Scan to learn more about our
latest product developments or go
to [https://www.blucherpipe.com/
resources/literature-and-tools](https://www.blucherpipe.com/resources/literature-and-tools)

BLÜCHER® LINEA Installation Instructions

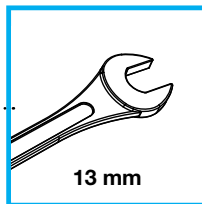
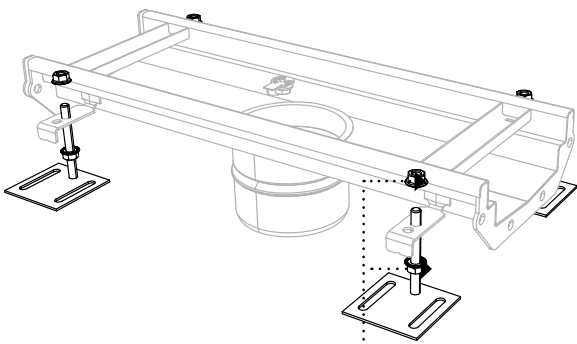
1



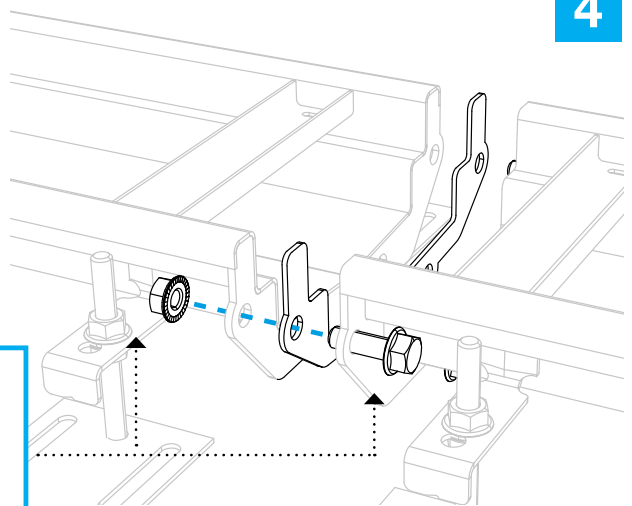
2



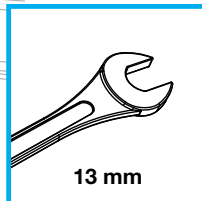
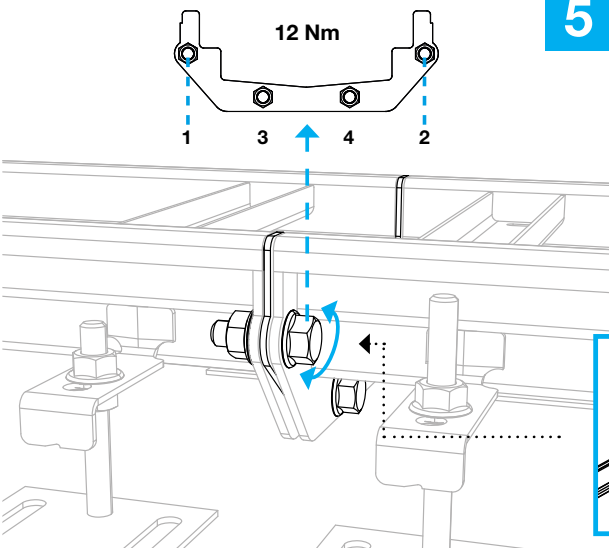
3



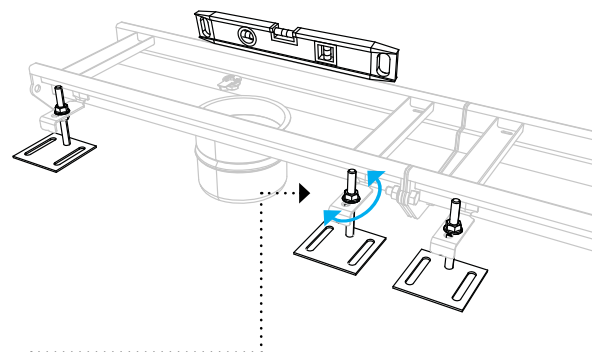
4



5

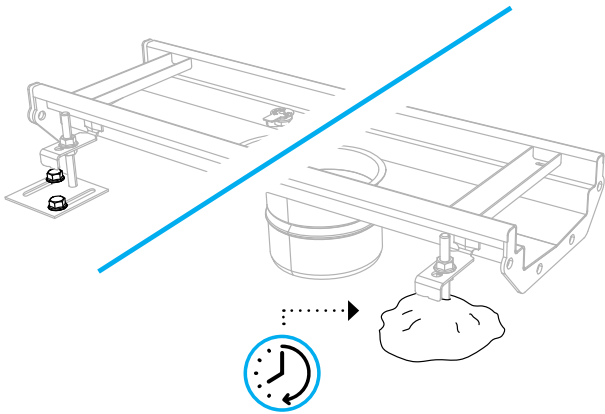


6

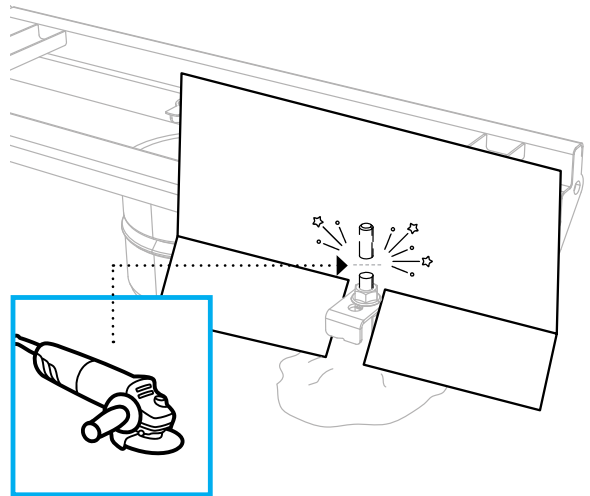


BLÜCHER® LINEA Installation Instructions

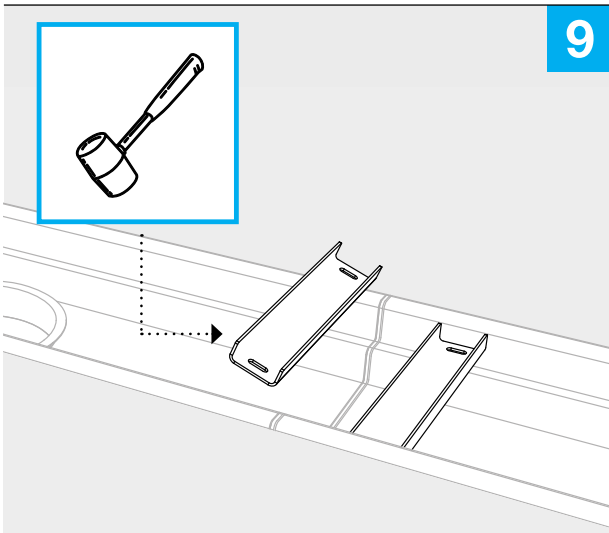
7



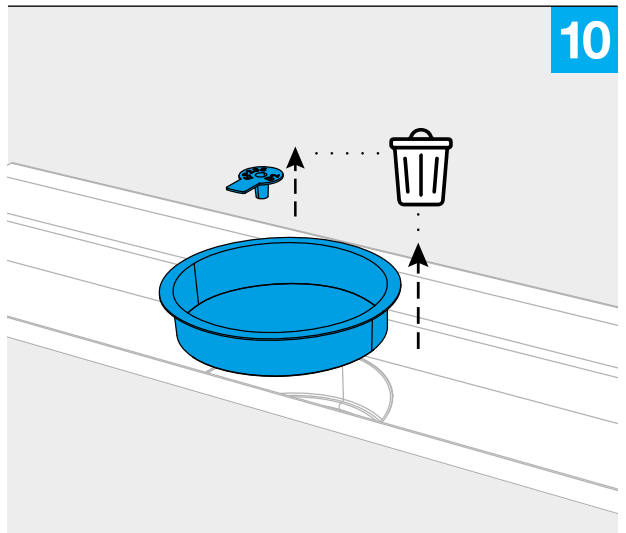
8



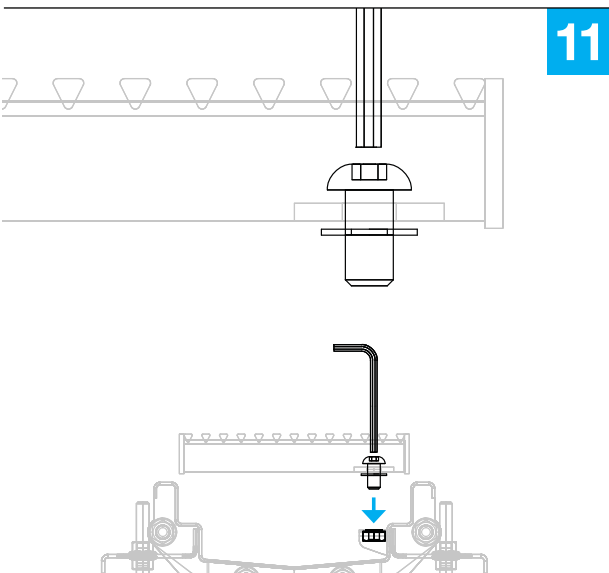
9



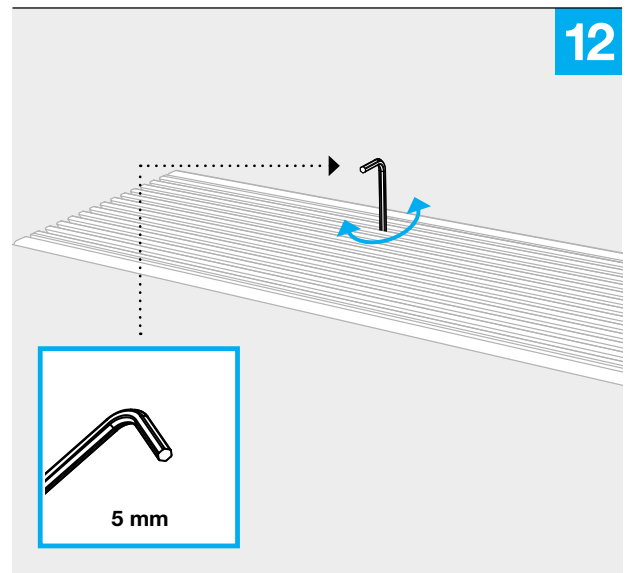
10



11



12



STREAMLINED
MODULAR
AESTHETIC
EASY INSTALL



For more information,
scan the QR-code or go to
www.BLUCHERpipe.com

BLÜCHER®

A WATTS Brand